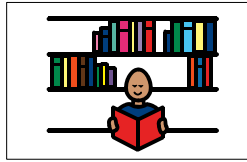


## Boardmaker in Libraries



### Drop-in sessions in Leith Library

Boardmaker is a computer programme which is used to make visual symbol supports. It is now available in 6 libraries in Edinburgh (Craigmillar, Central, Drumbrae, Gilmerton, Leith and Wester Hailes). Parents and carers of children and family members of adults with additional support needs can use the resource independently during library opening hours.

#### Boardmaker Drop-in sessions will also be offered for parents and carers who wish to:

- have support to use Boardmaker
- look at examples of visual support resources (e.g. timetables, choice boards)
- make their own visual supports using Boardmaker
- discuss the way they are using or adapting symbols at home
- meet other families

#### Who are the Boardmaker Drop-in's for?

These drop-in sessions are for parents or carers of children or family members of adults with additional support needs. These sessions are designed to support the use of the Boardmaker software to create visuals for the use at home.

There are no crèche facilities. These sessions are not suitable for professional carers working with individuals with additional support needs.

#### When are the Boardmaker Drop-ins?

Leith 2017	Daytime Sessions 10-11.30am	Evening Sessions 6.30- 8:00pm
June	9th	
July		3rd
August	11th	
September		4 <sup>th</sup>
October	13th	
November		6th
December	8th	

#### Who runs the Drop-ins?

The drop-ins will be run by staff from Education and Health services, in partnership with third sector organisations. The staff can discuss ways to make and use visual supports. For further queries or information about Boardmaker in libraries please contact your local library.